

Test Program

**Model : LCDM-1000
(Cash Dispensing Unit)**

Total Page : 8 pages (including cover)

Date : 2002. 3

Version : V3.0(INT)

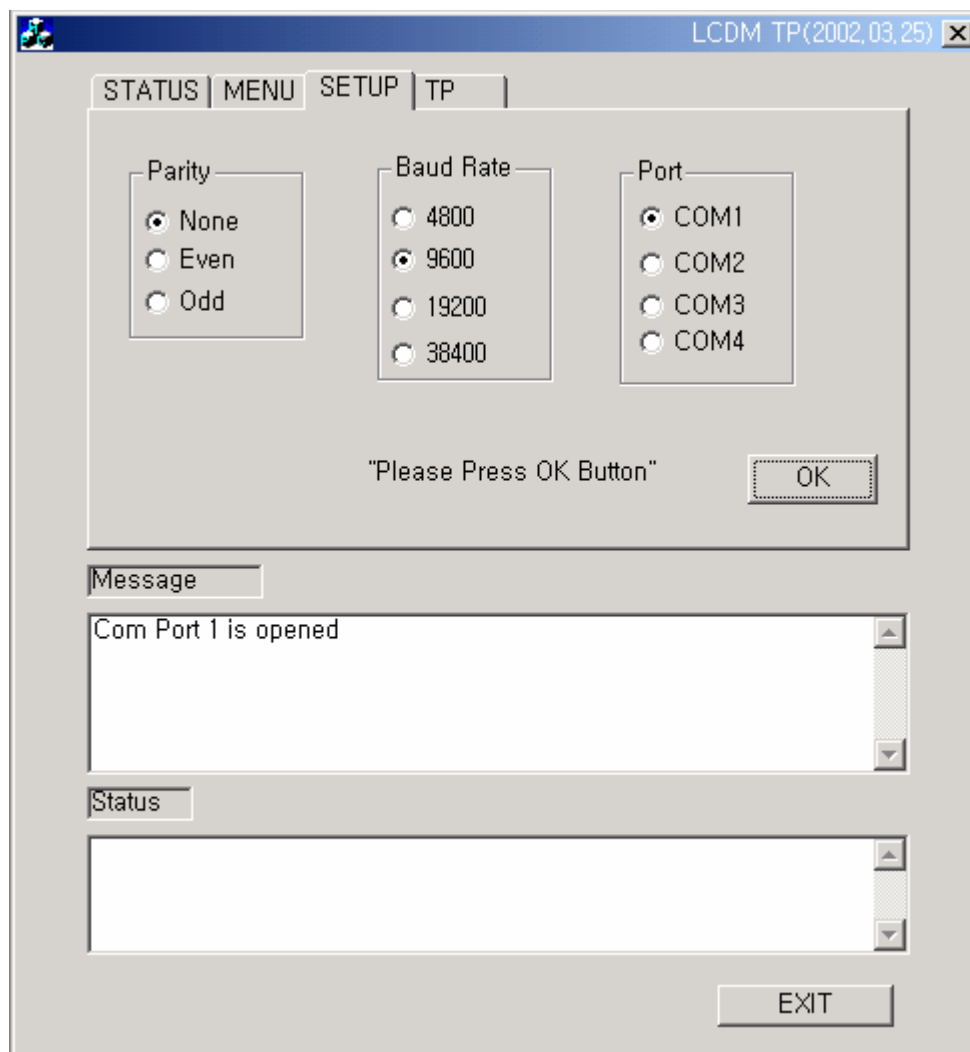


PULOON Technology Inc.

= Operating the LCDM-1000

I. SETUP

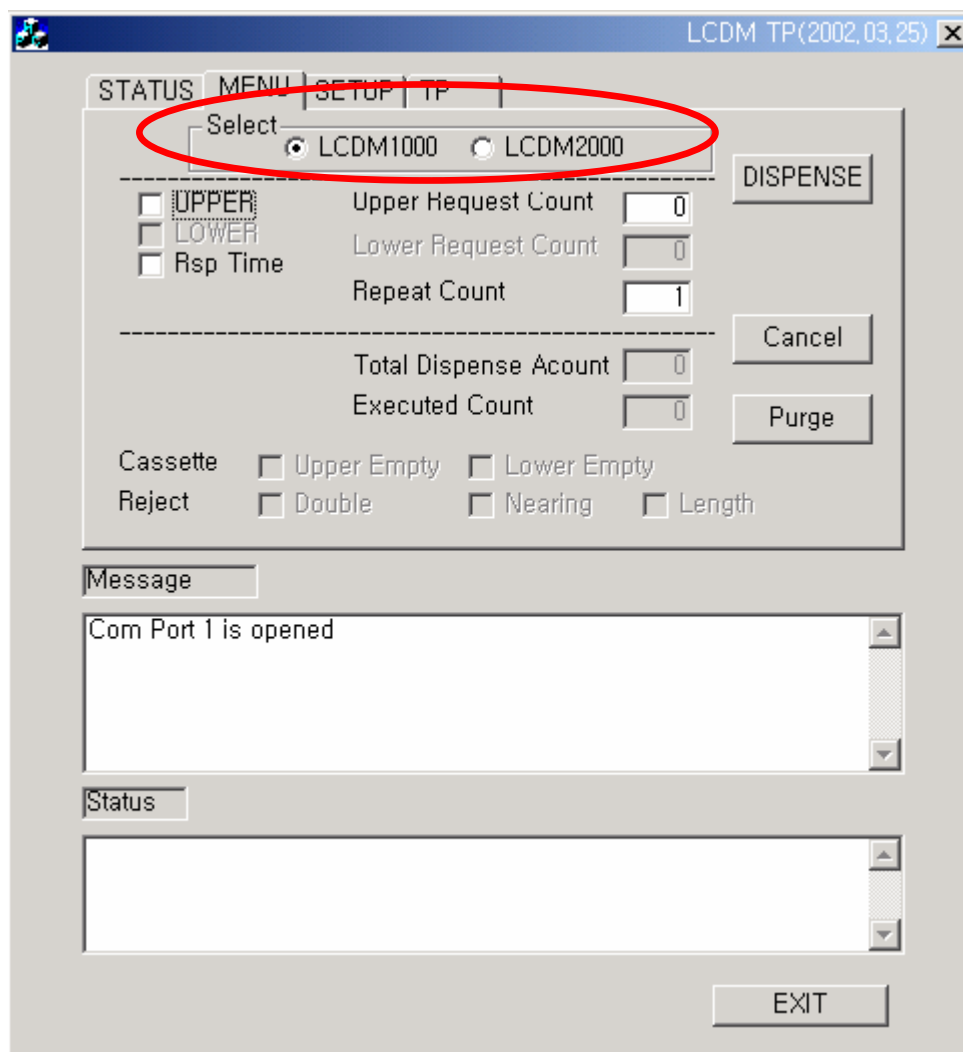
- 1) Start the test program "LCDMTP"
- 2) Maintain default value like below.
(If you need to choose another port, check the other port number)
- 3) Press "OK" button



< Fig 1 : SETUP PAGE >

II. MENU

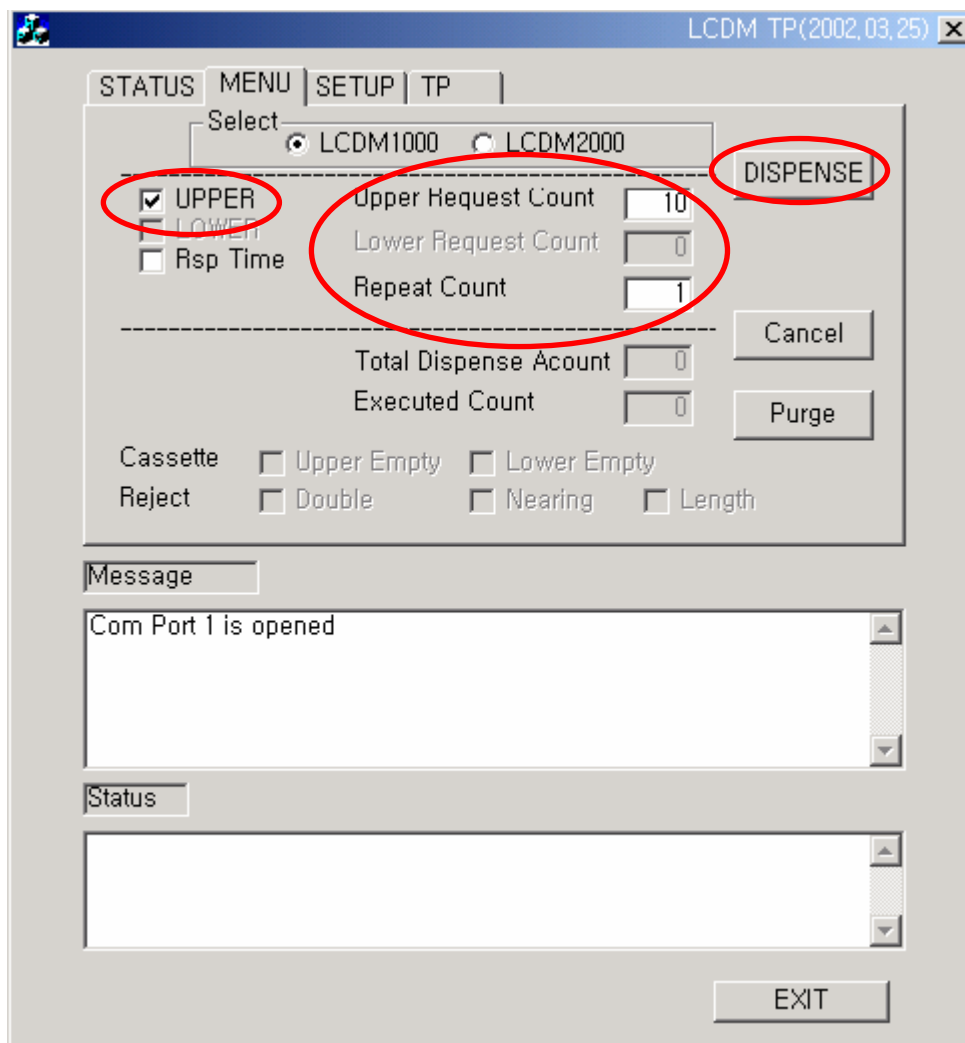
- 1) Choose LCDM-1000 or LCDM-2000



< Fig 2 : MENU PAGE >

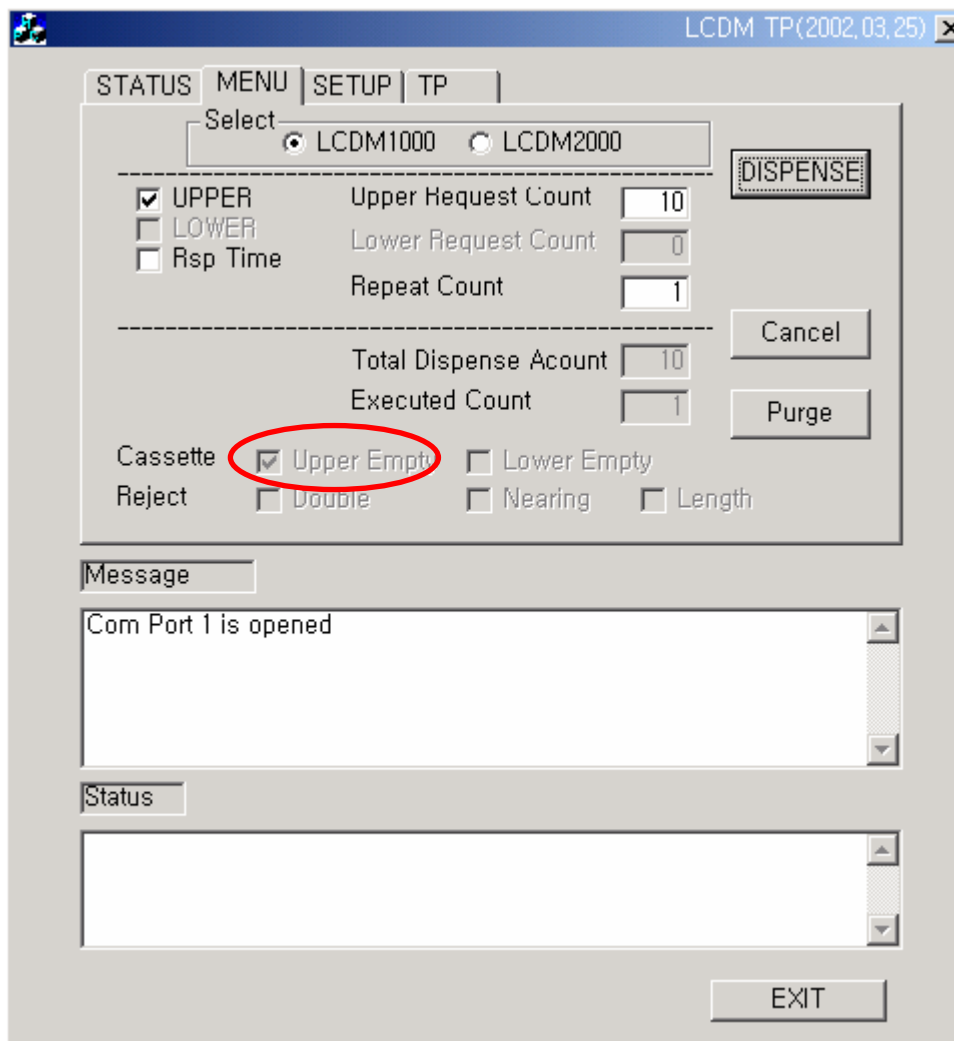
2) DISPENSE

- (1) Check UPPER
- (2) Fill in the blank of "Upper Request Count" and "Repeat Count" (Recommended Values are from 1~20 for the XXX Request Count, and 1~999 for the Repeat Count)
- (3) Press the button of "DISPENSE"



<Fig 3 : Ten bills are dispensed 1time from cassette>

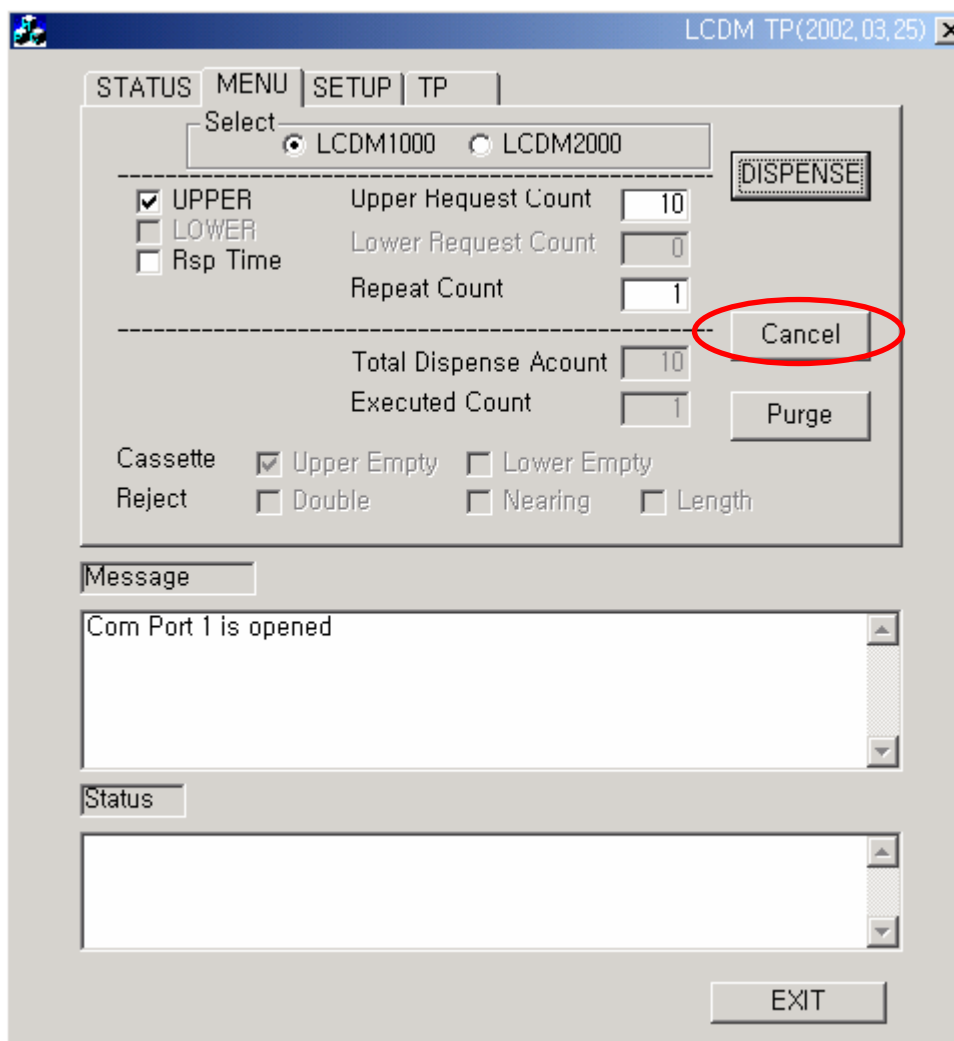
(4) If Near-End occurs, V mark is checked at “Upper Empty”



<Fig 4 : Near-End occurs>

3) PURGE

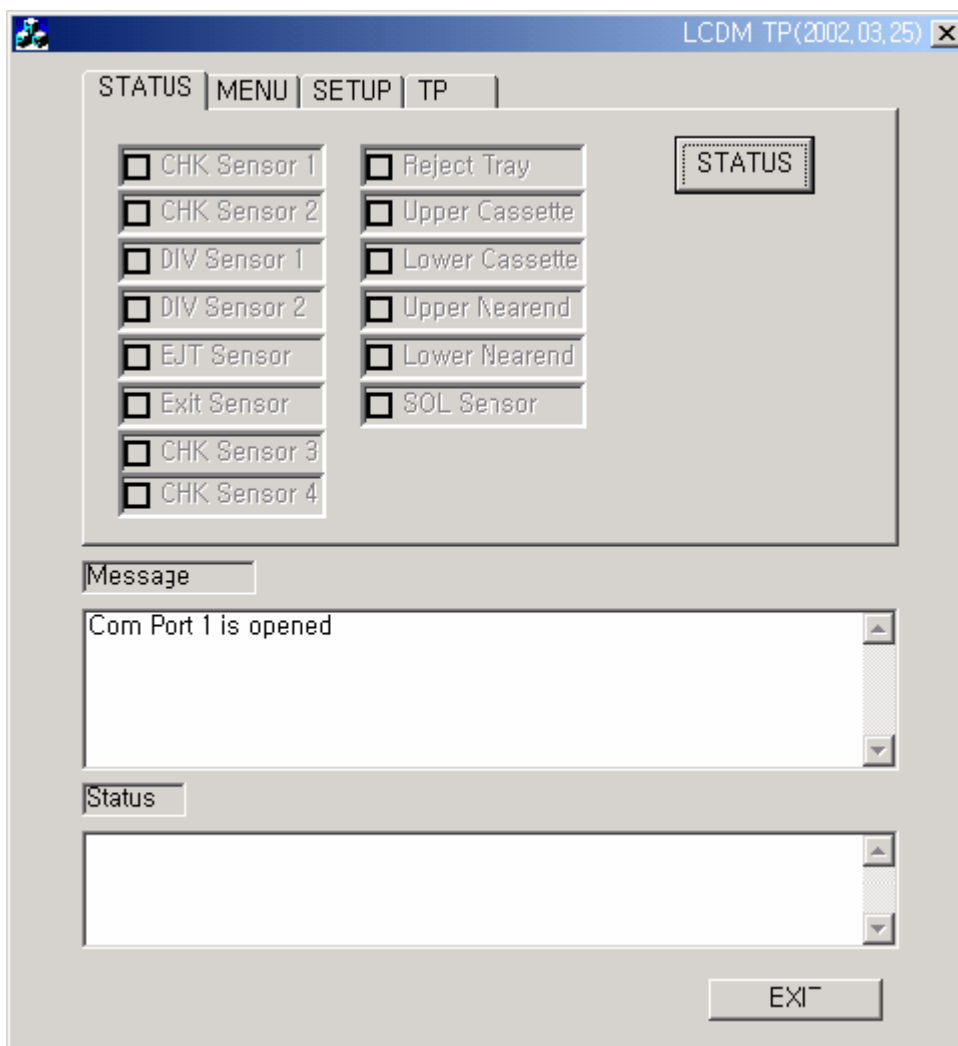
If you want to clear the note in the path, press the button of “Purge”



<Fig 4 : Purge>

III. STATUS

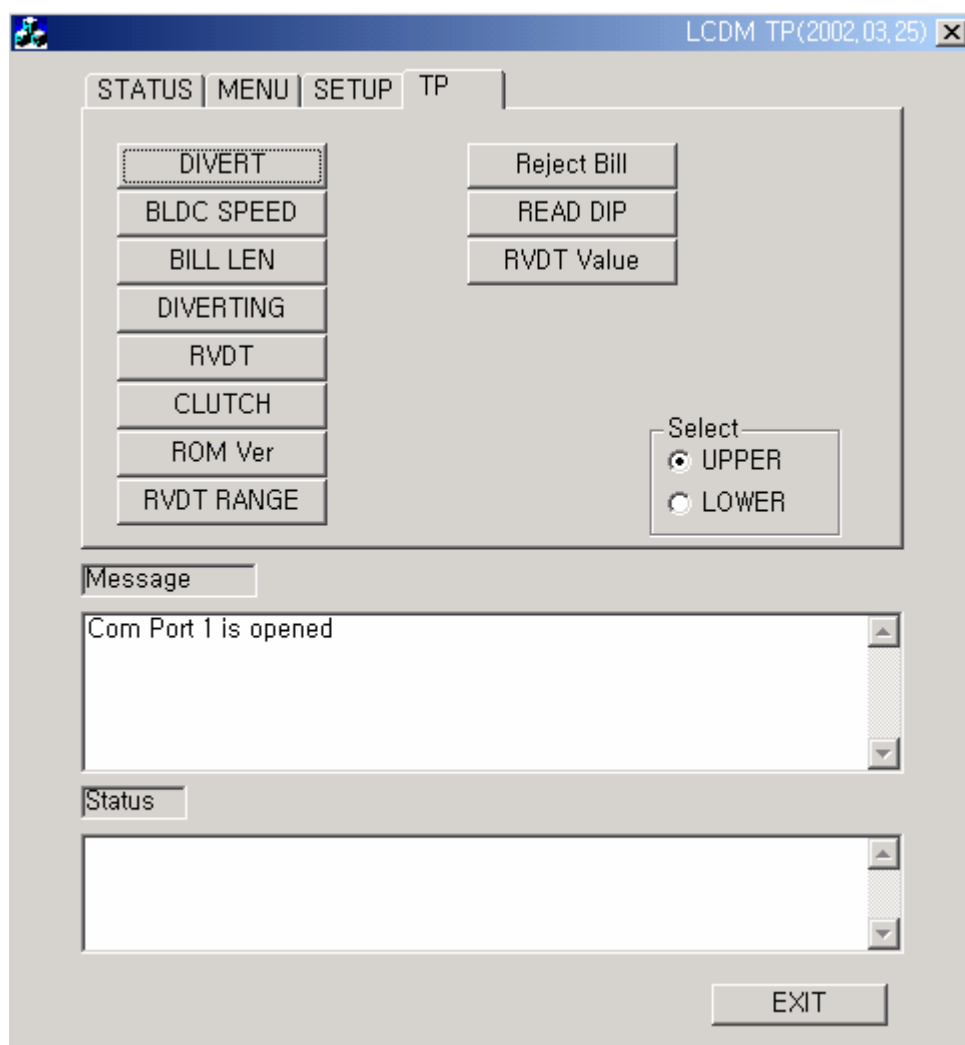
- 1) Press "STATUS" button and all sensors are rechecked.
This shows system status for you.
- 2) If sensor error occurs, V mark is checked at each column accordingly.



< Fig 5 : STATUS PAGE >

IV. TP

- 1) This page is about test program for checking each function and element of the unit.
- 2) Motor Speed, Bill Length, Test Dispense, Diverting, RVDT Value, ROM Version and Clutch Tests can be performed and examined.



< Fig 6 : TP PAGE >